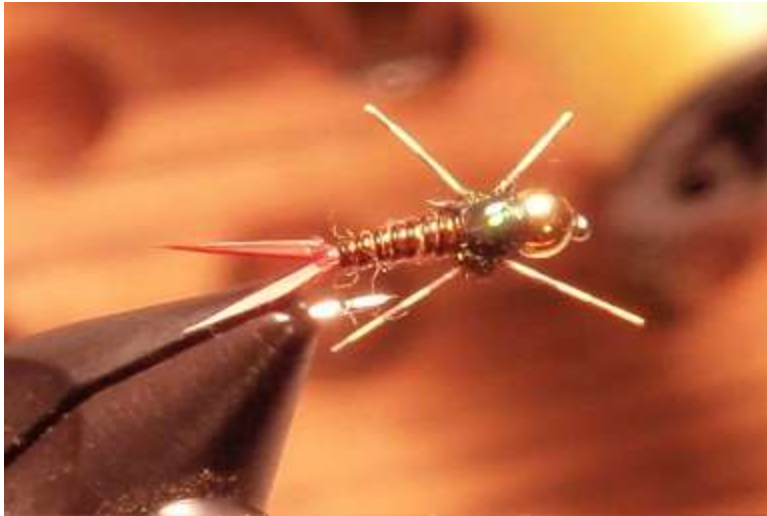


Copper Bob



Class: Attractor - Nymph

Originator: Bob White

Source: The Fly Shop

Or Tie Your Own

Clay's Notes

I used the Copper Bob on the Trinity River for steelhead a bit ago. It was used with the legs and without the legs (cut off). It is tied commercially with a stout hook and wide gap which make it perfect for steelhead. Tie it in copper, blue and black for steelhead. In the smaller sizes it should work for trout as well.

Copper Bob Tying Recipe

Hook: TMC 3761 (The commercial tie has a little wider gape for better hooking)
Thread: 6/0 black
Bead: Gold Bead head
Tail: Brown goose biots
Abdomen: Contrasting copper wire
Wing case: 6-8 strands of krystal flash (the commercial fly use a few strands of pearl flashabou)
Thorax: Peacock Herl
Legs: Centipede Legs
Wing Pad: Epoxy Wing Pad

For information on Guiding, Classes, Workshops & Technique Clinics, Contact Clay Hash

www.FlyFishingTraditions.com



ClayHash.fft@gmail.com